

Manchester Friends of the Earth

Looking back on 2021



**Friends of
the Earth
Manchester**

1. Will you sign the Climate Pledge: "If elected I pledge to ensure that our council works with local residents to rapidly implement a Climate Action Plan which drastically cuts emissions over the next 10 years, and that the climate and ecological emergency is a deal breaker in all council actions."

Background info: Greater Manchester has set a target of net zero emissions by 2038 and reducing our climate emissions by 50% within the next 5 years which will mean reducing emissions by at least 15% each year.

See also the [Climate Action Plan for Councils](#) – A 50-point plan to tackle the climate and nature emergency produced by Friends of the Earth.

How did candidates answer this question?

APRIL Local Election Survey

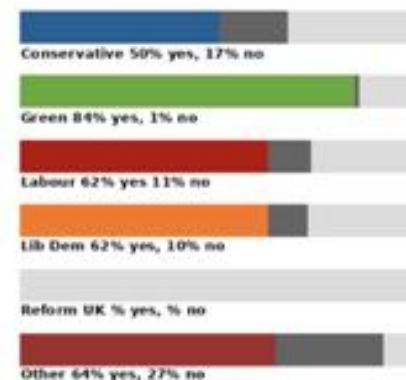
Question 7 -

7. Would you support a ban on pavement parking in your council area?

[See background information](#)

[See candidate responses](#)

Party	Yes	No	Undecided
Conservative	50% (3)	17%(1)	33% (2)
Green	84% (75)	1%(1)	15% (13)
Labour	62% (39)	11%(7)	27% (17)
Lib Dem	62% (36)	10%	28% (16)
		(6)	
Reform UK	0	0	0
Other	64% (7)	27%	9% (1)
		(3)	
All	70%	8%	22% (49)
	(160)	(18)	



The table and chart show the number of candidates answering 'Yes' (colour), 'No' (grey) and 'Don't Know' as absolute numbers and percentages (in brackets).

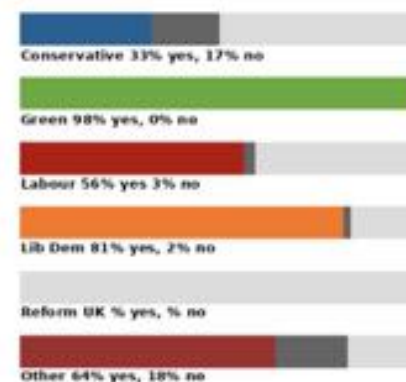
Question 8 -

8. Do you support the introduction of a cap on emissions from flights to and from Manchester Airport?

[See background information](#)

[See candidate responses](#)

Party	Yes	No	Undecided
Conservative	33% (2)	17%(1)	50% (3)
Green	98% (87)	0	2% (2)
Labour	56% (35)	3%(2)	41% (26)
Lib Dem	81% (47)	2%(1)	17% (10)
Reform UK	0	0	0
Other	64% (7)	18%	18% (2)
		(2)	
All	78%	3%	19% (43)
	(178)	(6)	



The table and chart show the number of candidates answering 'Yes' (colour), 'No' (grey) and 'Don't Know' as absolute numbers and percentages (in brackets).

JULY Bike Friday returns

**BIKE
FRI
DAY
.ORG
30
JUL**

The original
Sociable Distance.
Join us 



SAVE. HOUGH. END. FIELDS.



This. Is. Not. The. Place.



#savehoughendfields

www.savehoughendfields.net



JULY

Save Hough End Fields

**JULY
Butterfly
Count**





**AUGUST
Social Cycle Ride**



**AUGUST
Bat Walk**



Decarbonisation Strategy - draft for consultation

June 2021



**SEPTEMBER
Consultation Response**



SEPTEMBER Big Green Week

Transport

The way we get around accounts for approximately a third of our carbon emissions in the UK (excluding aviation); making thinking about the way we travel an important thing to consider. [Read more](#)



Sustainable Consumption

We all love a shopping spree, but at what cost? Here are a few shopping challenges. [Read more](#)



Energy

Reducing the energy we use in our homes can make a big difference to the environment and our bank balance. [Read more](#)



Money

How we choose to spend our money can help support the sustainable businesses we want to see and send a message to those companies contributing most to climate change and biodiversity loss that their behaviour is not acceptable. [Read more](#)





SEPTEMBER
Wake Up Burnham



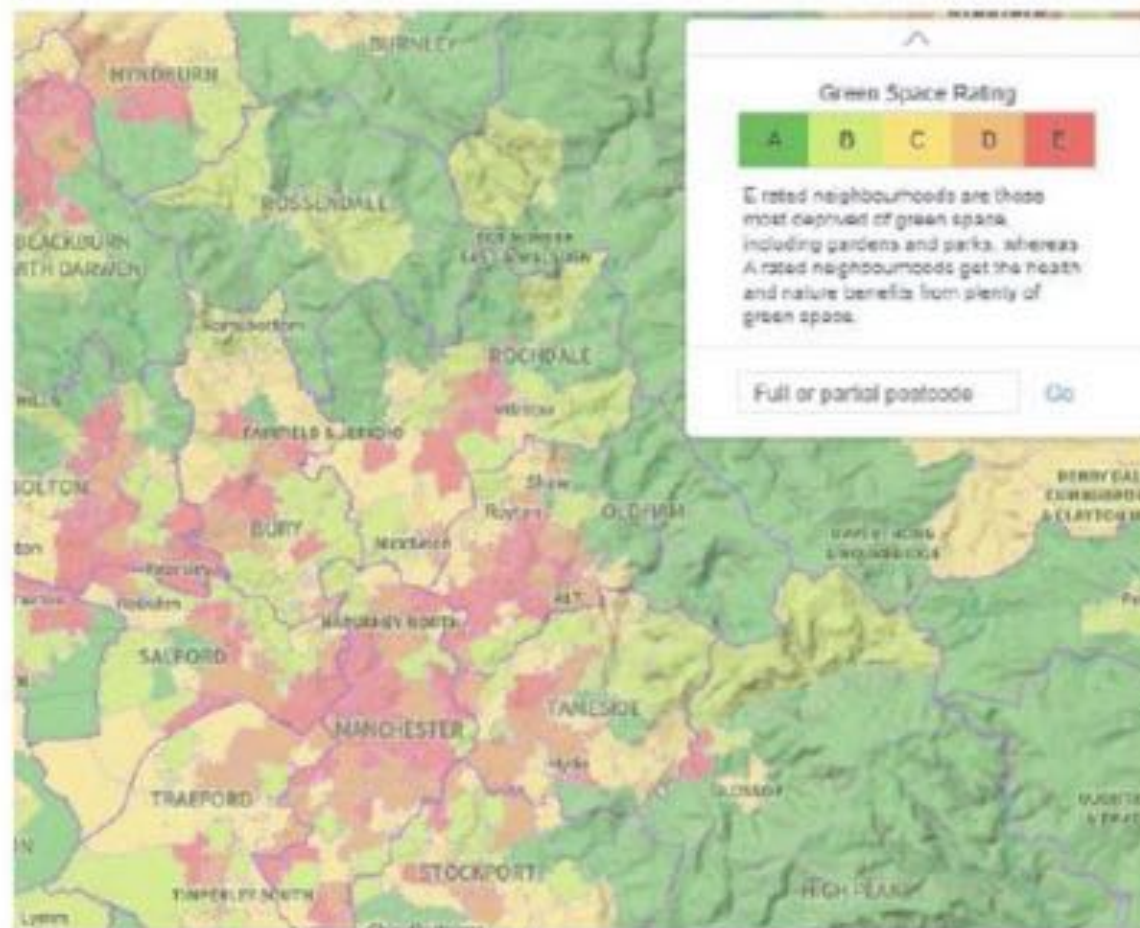
SEPTEMBER Conservative Party Conference



England's green space gap

How to end green space deprivation in England

September 2020





**NOVEMBER
COP
(Glasgow)**

DESTINATION:

BEE NETWORK



**NOVEMBER Bee Network
Conversation**